

Roxid® SLActive®

Roxid® SLA®

Implant Drivers

VeloDrill™ Aligner Pins

Profile Drills

Closure Caps

Healing Caps

Auxiliary Instruments

	Ø 3.75 mm				Ø 4.5 mm		Ø 5.5 mm		Ø 6.5 mm			
	Standard Plus (SP)	Standard (S)	Standard Plus (SP)	Standard (S)	Standard Plus (SP)	Standard (S)	Standard Plus (SP)	Standard (S)	Standard Plus (SP)	Standard (S)		
	035.30125	035.10125	035.31125	035.11125	035.34125	035.14125	035.35125	035.11125	035.37125	035.17125	035.38125	035.18125
6 mm	035.30065	035.10065	035.31065	035.11065	035.34065	035.14065	035.35065	035.15065	035.37065	035.17065	035.38065	035.18065
8 mm	035.30085	035.10085	035.31085	035.11085	035.34085	035.14085	035.35085	035.15085	035.37085	035.17085	035.38085	035.18085
10 mm	035.30105	035.10105	035.31105	035.11105	035.34105	035.14105	035.35105	035.15105	035.37105	035.17105	035.38105	035.18105
12 mm	035.30125	035.10125	035.31125	035.11125	035.34125	035.14125	035.35125	035.15125	035.37125	035.17125	035.38125	035.18125
14 mm	035.30145	035.10145	035.31145	035.11145	035.34145	035.14145	035.35145	035.15145	-	-	-	-
16 mm	035.30165	035.10165	035.31165	035.11165	035.34165	035.14165	035.35165	035.15165	-	-	-	-
18 mm	035.30185	035.10185	035.31185	035.11185	035.34185	035.14185	035.35185	035.15185	-	-	-	-
6 mm	035.20065	035.00065	035.21065	035.01065	035.24065	035.04065	035.25065	035.05065	035.27065	035.07065	035.28065	035.08065
8 mm	035.20085	035.00085	035.21085	035.01085	035.24085	035.04085	035.25085	035.05085	035.27085	035.07085	035.28085	035.08085
10 mm	035.20105	035.00105	035.21105	035.01105	035.24105	035.04105	035.25105	035.05105	035.27105	035.07105	035.28105	035.08105
12 mm	035.20125	035.00125	035.21125	035.01125	035.24125	035.04125	035.25125	035.05125	035.27125	035.07125	035.28125	035.08125
14 mm	035.20145	035.00145	035.21145	035.01145	035.24145	035.04145	035.25145	035.05145	-	-	-	-
16 mm	035.20165	035.00165	035.21165	035.01165	035.24165	035.04165	035.25165	035.05165	-	-	-	-
18 mm	035.20185	035.00185	035.21185	035.01185	035.24185	035.04185	035.25185	035.05185	-	-	-	-

Surgical Handle 066.4000

Short, L 21 mm		066.4101
Medium, L 26 mm		066.4107
Long, L 31 mm		066.4102
Extra long, L 36 mm		066.4108

Short, L 21 mm		066.4201
Medium, L 26 mm		066.4207
Long, L 31 mm		066.4202

Short, L 21 mm 066.4205

Long, L 31 mm 066.4206

Drill No. 1 (Pilot Drill)

Ø 2.2 mm	
Short, L 34 mm	066.1301
Medium, L 38 mm	066.1501
Long, L 42 mm	066.1701

Alignment Pin 046.799

Drill No. 2

Ø 2.8 mm	
Short, L 34 mm	066.1302
Medium, L 38 mm	066.1502
Long, L 42 mm	066.1702

Alignment Pin 046.800

Drill No. 3

Ø 3.2 mm	
Short, L 34 mm	066.1303
Medium, L 38 mm	066.1503
Long, L 42 mm	066.1703

Alignment Pin 046.801

Drill No. 4

Ø 3.5 mm	
Short, L 34 mm	066.1304
Medium, L 38 mm	066.1504
Long, L 42 mm	066.1704

Alignment Pin 046.802

Drill No. 5

Ø 3.7 mm	
Short, L 34 mm	066.1305
Medium, L 38 mm	066.1505
Long, L 42 mm	066.1705

Alignment Pin 046.803

Drill No. 6

Ø 4.2 mm	
Short, L 34 mm	066.1306
Medium, L 38 mm	066.1506
Long, L 42 mm	066.1706

Alignment Pin 046.804

Drill No. 7

Ø 4.7 mm	
Short, L 34 mm	066.1307
Medium, L 38 mm	-
Long, L 42 mm	066.1707

Alignment Pin 046.805

Drill No. 8

Ø 5.2 mm	
Short, L 34 mm	066.1308
Medium, L 38 mm	-
Long, L 42 mm	-

Alignment Pin 046.806

Drill No. 9

Ø 6.2 mm	
Short, L 34 mm	066.1309
Medium, L 38 mm	-
Long, L 42 mm	-

Alignment Pin 046.807

NT Closure Cap

H	Ø 2.7 mm		Ø 4 mm	
	036.32005	-	-	036.02015
H 1.5 mm	-	-	-	036.12015

RT Closure Cap

H	Ø 2.7 mm		Ø 5.5 mm	
	036.32005	-	-	036.12015
H 1.5 mm	-	-	-	036.12015

NT Closure Cap

H	Ø 2.7 mm		Ø 4 mm	
	036.32005	-	-	036.02015
H 1.5 mm	-	-	-	036.12015

RT Closure Cap

H	Ø 2.7 mm		Ø 5.5 mm	
	036.32005	-	-	036.12015
H 1.5 mm	-	-	-	036.12015

NT Healing Cap

H	Ø 4 mm	
	H 2.0 mm	-
	H 3.0 mm	036.02035
	H 4.5 mm	036.02045

RT Healing Cap

H	Ø 5.5 mm	
	H 2.0 mm	036.12025
	H 3.0 mm	036.12035
	H 4.5 mm	036.12045

NT Healing Cap

H	Ø 4 mm	
	H 2.0 mm	-
	H 3.0 mm	036.02035
	H 4.5 mm	036.02045

RT Healing Cap

H	Ø 5.5 mm	
	H 2.0 mm	036.12025
	H 3.0 mm	036.12035
	H 4.5 mm	036.12045

WT Closure Cap

H	Ø 2.7 mm	
	036.32005	-

WT Healing Cap

H	Ø 7.2 mm	
	H 2.0 mm	036.22025
	H 3.0 mm	036.22035
	H 4.5 mm	036.22045

Torque Control Device 066.1100

Torque Control Device for Ratchet 046.049

Ratchet 046.119

Holding Key 046.064

Implant depth gauge 066.2000

Selection guide for the Straumann® Modular Cassette and instruments  
 The Straumann® Modular Cassette Selection Guide (702824/en) helps to define the required Modular Cassette parts and instruments needed for a specific indication. Each chapter includes an order list as well as a set-up overview which shows how to assemble the parts.

The Straumann® TLX Implant System has a simple and consistent laser marking for quick and precise identification of secondary parts, and auxiliaries. This concept allows for correct identification of matching components, and simplifies the communication between the individuals involved in the treatment process.

- Components laser-marked NT (Narrow, TorcFit™) and with one dot can be used on all TLX Implants with the NT neck.
- Components laser-marked RT (Regular, TorcFit™) and with two dots can be used on all TLX Implants with the RT neck.
- Components laser-marked WT (Wide, TorcFit™) and with three dots can be used on all TLX Implants with the WT neck.

	Prosthetic platform	Implant Diameters	Implant platform
NT •		Ø 3.75 mm Ø 4.5 mm	
RT ••		Ø 3.75 mm Ø 4.5 mm	
WT •••		Ø 5.5 mm Ø 6.5 mm	

No WT Abutments on NT and RT Implants!  
 No NT Abutments on RT and WT Implants!  
 No RT Abutments on NT and WT Implants!

ABBREVIATIONS/FOOTNOTES

AH	Abutment height
H	Height
NT	Narrow TorcFit™
RT	Regular TorcFit™
WT	Wide TorcFit™
S	Standard
SP	Standard Plus
V4	Pack of 4

\* Straumann® CARES® Abutments can be ordered via the Straumann® CARES® Visual Software or at [www.cares-straumann.com](http://www.cares-straumann.com). They are manufactured at the Straumann® CAD/CAM production center. Also available via Straumann® CARES® Scan & Shape Service.  
 Novaloc® is a registered trademark of Valoc AG, Switzerland.  
 Product images are not to scale.

International Headquarters  
 Institut Straumann AG  
 Peter Merian-Weg 12  
 CH-4002 Basel, Switzerland  
 Phone +41 (0)61 965 11 11  
 Fax +41 (0)61 965 11 01  
[www.straumann.com](http://www.straumann.com)

**Straumann® TLX Implant System**  
System Overview  
**TLX PROSTHETICS**

**Impression Posts**  
**Digital Impression Posts**  
**Implant Analogs**  
**Scanbodies**

**Temporary Restorations**

**Variobase® Cementable Abutments**  
**Gold Abutments**  
**Burn-out Copings**

**CARES® Abutments**  
**CARES® Screw-retained Bars and Bridges**

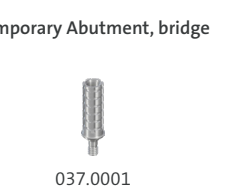
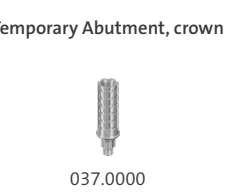
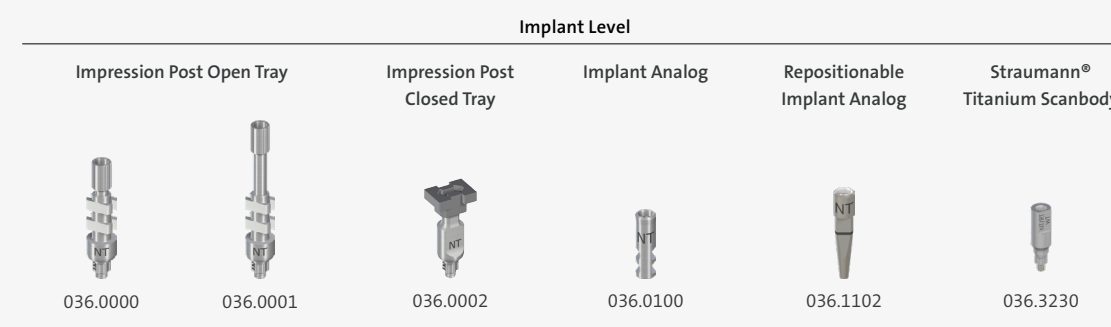
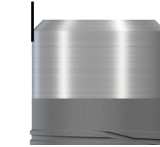
**Pre-milled Abutment Blanks**

**Screw-retained Abutments**  
**Copings**

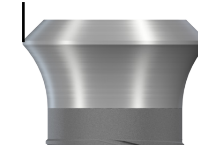
**Novaloc®**

**Novaloc® Additional Parts**

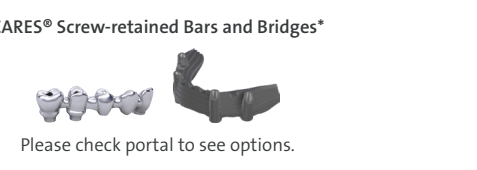
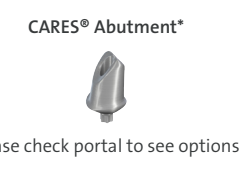
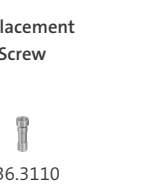
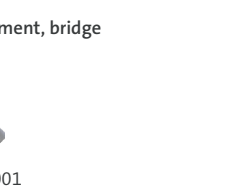
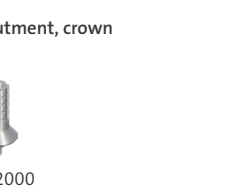
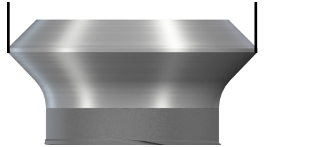
**NT - Narrow TorcFit™**  
**Ø 3.5 mm**



**RT - Regular TorcFit™**  
**Ø 4.8 mm**



**WT - Wide TorcFit™**  
**Ø 6.5 mm**



\* Straumann® CARES® Abutments and Screw-retained Bars and Bridges can be ordered via the Straumann® CARES® Visual Software or at [www.cares.straumann.com](http://www.cares.straumann.com), manufactured at the Straumann® CAD/CAM production center, also available via Straumann® CARES® Scan & Shape Service

