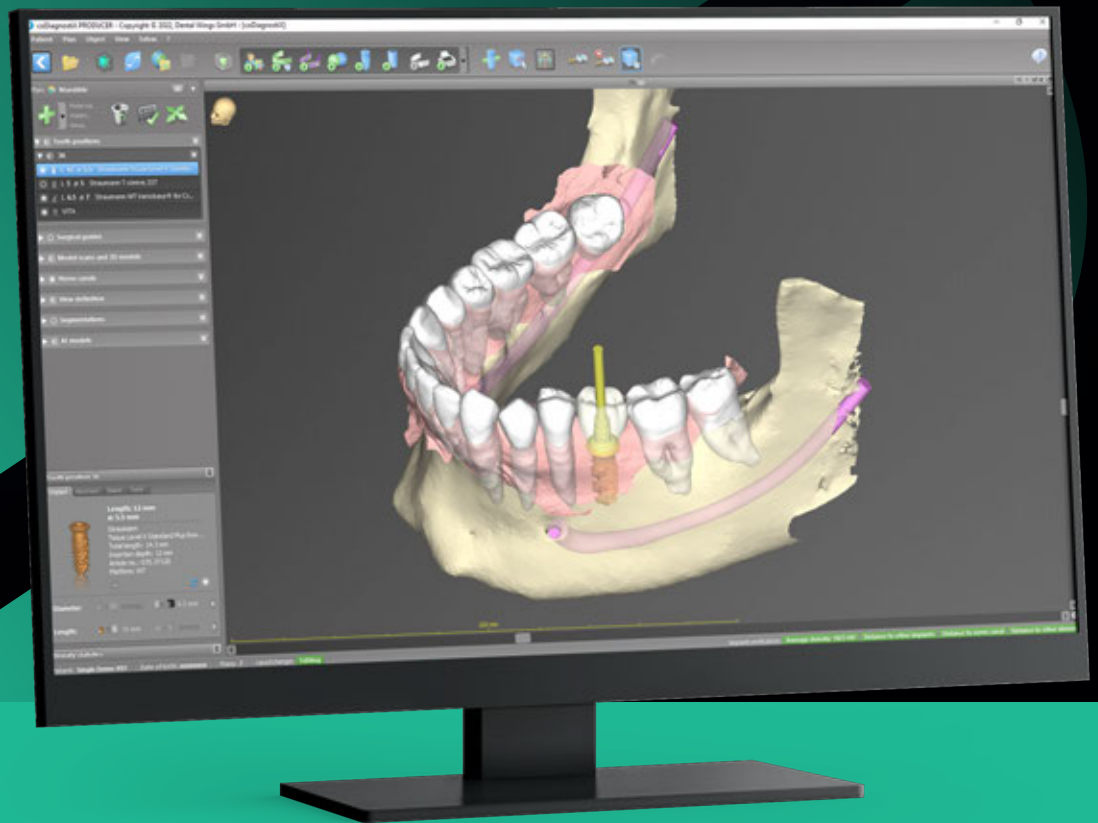


# CODIAGNOSTIX® FOR CLINICIANS

Planning power at your fingertips.



PREDICTABLE



EFFICIENT



EASY

*Product information*

# DIGITAL **TREATMENT PLANNING:** DELIVERING HIGH-QUALITY AESTHETIC CARE.

In our fast and dynamic world, patients deserve high-quality and aesthetic care with minimal visits. Digital treatment planning is becoming the new standard to help clinicians meet these growing demands, while improving patient engagement. coDiagnostiX®, our state-of-the-art dental treatment planning software, will support you on this journey.



*“In coDiagnostiX®, I can put all the data together – from the CT scan of the patient to the STL of the impression, which gives me the opportunity to study the patient in an overall situation and provide my patient with a better treatment planning.”*

**Dr. Stefano Storelli, Italy**



### **PREDICTABLE OUTCOMES**

Protect critical anatomical structures and ensure predictable outcomes for your patients through high-quality digital treatment planning and guided procedures.



### **REDUCED TREATMENT TIME**

coDiagnostiX® makes the most out of immediate procedures, allowing for faster time to teeth and less appointments for your patients.



### **ENHANCED PATIENT EXPERIENCE**

Satisfy your patients' growing demands for better aesthetic results and stressless treatment with prosthetically driven planning and minimal invasive protocols.

# **GIVE YOUR PATIENTS A REASON TO SMILE.**



# EXPERIENCE THE **DIFFERENCE.**

coDiagnostiX® improves your efficiency and maximizes your performance.



### **PEACE OF MIND**

Plan your treatment upfront with coDiagnostiX® and work with highly precise surgical guides, reducing stress during surgery.



### **LESS CHAIR TIME**

Save time and increase your efficiency by facilitating immediate procedures and shorter surgery times, enabled by guided protocols.



### **SEAMLESS COLLABORATION**

Take advantage of improved collaboration features and become your clinicians' partner of choice.



### **IMPROVED PATIENT ENGAGEMENT**

Discuss and explain the planned treatment to your patient showing a visualization of the treatment plan.



### **SEAMLESS COLLABORATION**

Improve the aesthetic outcome by sharing and discussing the treatment plan with your referring clinician, peers or your laboratory.

# PLANNING POWER AT YOUR FINGERTIPS.

From highly accurate guides to outstanding collaboration features: discover the whole powerful set of functions that coDiagnostiX® has to offer.

## PREDICTABILITY

Achieve predictable outcomes even with complex cases through prosthetically driven planning and the design of highly precise surgical guides.

## SIMPLICITY

Start planning your first cases quickly with our award-winning EASY mode user interface.

## EFFICIENCY

coDiagnostiX® efficiently supports your workflow for edentulous cases by facilitating stackable guides and an unlimited import of STL files.

## ALL-IN-ONE SOLUTION

Benefit from one software that supports the full range of clinical indications, including guide design for implantation, endodontic, bone reduction, apicoectomy, sinus-lift or stackable guides. No need for an additional software.





reddot winner 2020  
interface design



[codiagnostix.com/demo](https://codiagnostix.com/demo)  
Visit our website or download  
a demo version.



## OPEN SYSTEM

Plan any implant system registered in your country. With the integrated and validated library, elements from most of the major manufacturers are easily at hand.

## COLLABORATION

Access to new workflows and seamless, efficient collaboration with other clinicians and your lab, with our cloud-based communication platform caseXchange™ and our real-time CAD integration Synergy.

## AESTHETIC OUTCOME

An improved workflow for emergence profile design together with the possibility to plan all components in coDiagnostiX® help to achieve a better aesthetic outcome.

## VISUALIZATION

Improve your clinical decision making with the support of 2D and 3D visualization of the patient data.

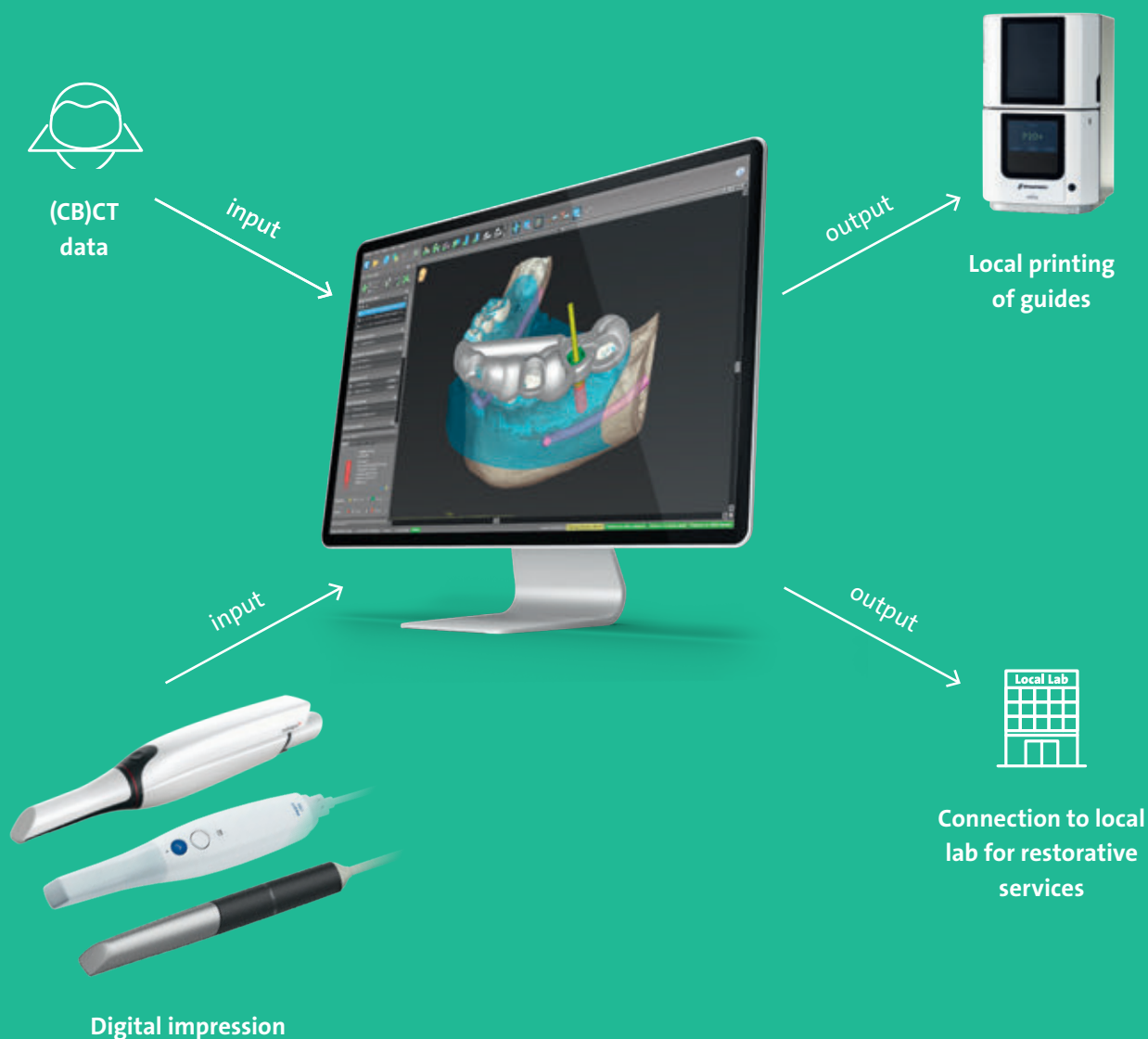






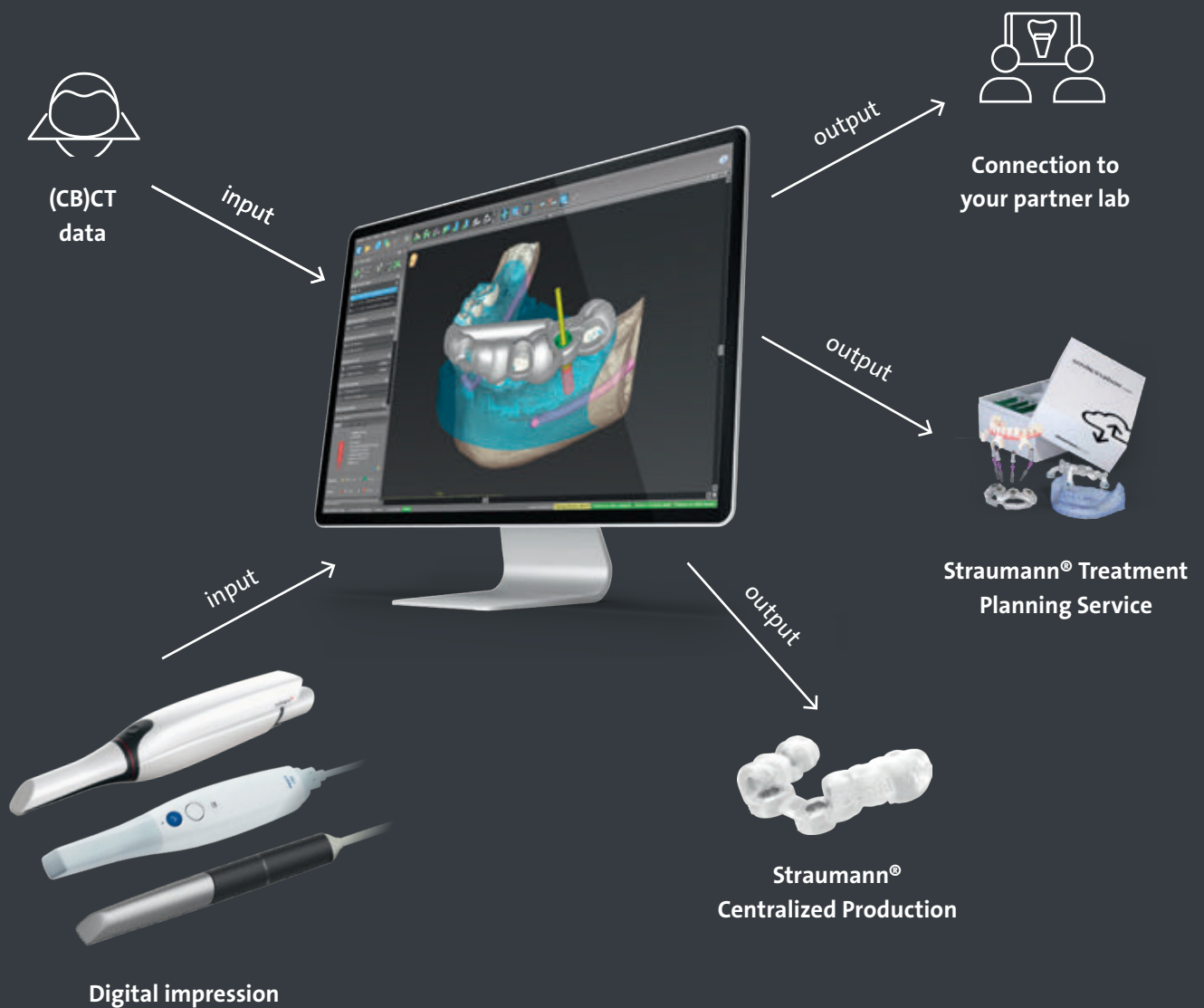
# CONNECTIVITY INHOUSE WORKFLOW

coDiagnostiX® smartly adapts to your individual needs supporting both inhouse and outsourced procedures letting you choose your favorite approach. Our inhouse workflow gives you the full control over all the work steps, from data import through to treatment planning, guide design and guide production. Ideal for tech-savvy users and specialists with a high number of cases.



# CONNECTIVITY OUTSOURCED WORKFLOW

You want to start quickly with your first cases or grow your practice with limited financial investment? Benefit from a seamless connection to your partner lab or access to Straumann® trusted services and the flexibility to outsource whenever you need and what you need – from single cases and selected tasks up to full service provision.

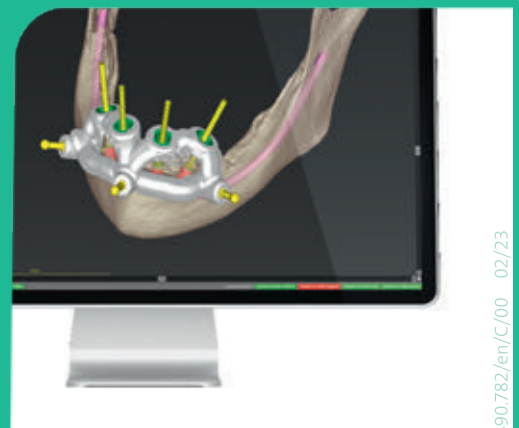


# STILL NOT SURE? WE GOT YOU!

Want to grow your practice? Digital dentistry can help you set the stage for the future of your work.

Contact your local Straumann Group representative to schedule a live demo and learn more about our Digital Solutions.

**Legal manufacturer**  
Dental Wings GmbH  
Duesseldorfer Platz 1  
09111 Chemnitz  
Germany



490.782/en/C/00 02/23

## SALES CONTACT

**Straumann Polska Sp. z o. o.**  
Szymanowskiego 2  
80-280 Gdańsk  
+48 58 341 45 79  
biuro@straumann.com  
www.straumann.pl

**Konrad Zajac**  
konrad.zajac@straumann.com  
Tel.: +48 518 753 900

**Piotr Fulek**  
piotr.fulek@straumann.com  
Tel.: +48 514 608 529

© Institut Straumann AG, 2023. All rights reserved.  
Straumann® and/or other trademarks and logos from Straumann® mentioned herein are the trademarks or registered trademarks of Straumann Holding AG and/or its affiliates.

