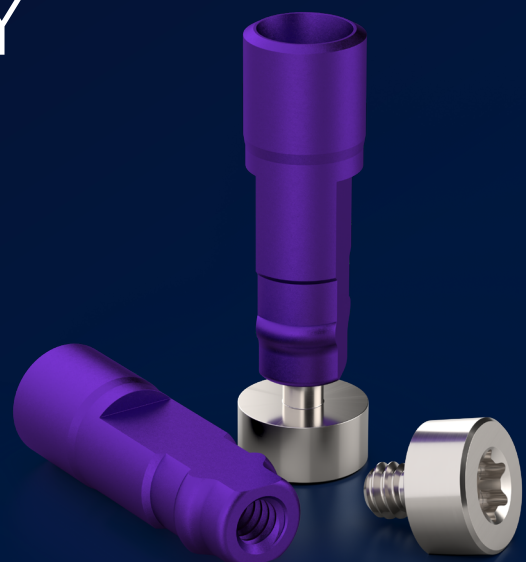




TIME FOR **PRECISION**
LABORATORY
IMPLANTS
CAD/CAM-CS



CADCAM-CS LABORATORY IMPLANTS



DISCOVER WHAT'S NEXT

Expertly crafted for seamless integration into your digital workflow, our new CAD/CAM laboratory implants feature a precision-engineered bottom screw for accurate and stable positioning within models. Once inserted, the laboratory implants remain firmly in place, eliminating the need for adjustments.

In addition, they incorporate the "click" function, providing customers a dual security system.



Efficiency

Simplified stock management for seamless operations.



Precision

Ensures precise positioning and minimizes micro-movements.



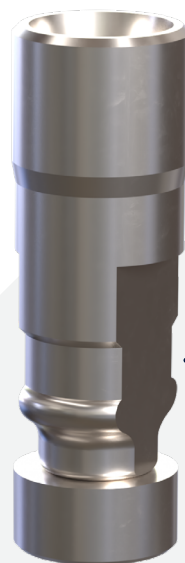
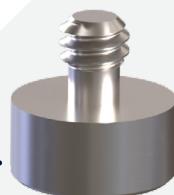
Dual Security

Featuring the bottom screwing and "click" function.

Compact size to prevent collisions with adjacent laboratory implants

"Click" feature

One counter screw and one placement instrument for all series (Hex 1.26)



Color coded and laser marked for easy identification

Made from titanium Grade 5

Anti-rotational grooves

*CS: Counter screw

STEP BY STEP APPLICATION



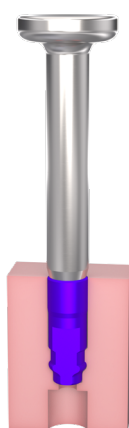
1

Screw the placement instrument into the laboratory implant.



2

Insert the laboratory implant inside the printed model taking into account that the anti-rotation grooves are aligned with the model geometry.



"Click"

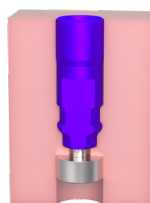
3

Push down until it clicks to ensure that it is in the final position.



4

Use the placement instrument Hex 1.26 to attach the counter screw into the laboratory implant from the bottom of the model for additional fixation.



5

The laboratory implant CADCAM-CS is in its final position.

Find out more about our products here



Scan or click to download the Medentika CADCAM libraries





RE-ENGINEERED COMPATIBLE PROSTHETICS.



© MEDENTiKA® GmbH, 2025. All rights reserved.
MEDENTiKA® and/or other trademarks and logos from MEDENTiKA® mentioned herein
are the trademarks or registered trademarks of MEDENTiKA® GmbH and/or its affiliates.
Please note that this brochure contains images created by AI.

PM02_01_0070 EN 02/25

MEDENTiKA® GmbH
Hammweg 8–10
76549 Hügelsheim
Germany
info@medentika.de
www.medentika.com

